



# MONTHLY MEMBERSHIP PROGRESS REPORT

District 2 A3

Results as of: 2/28/2015

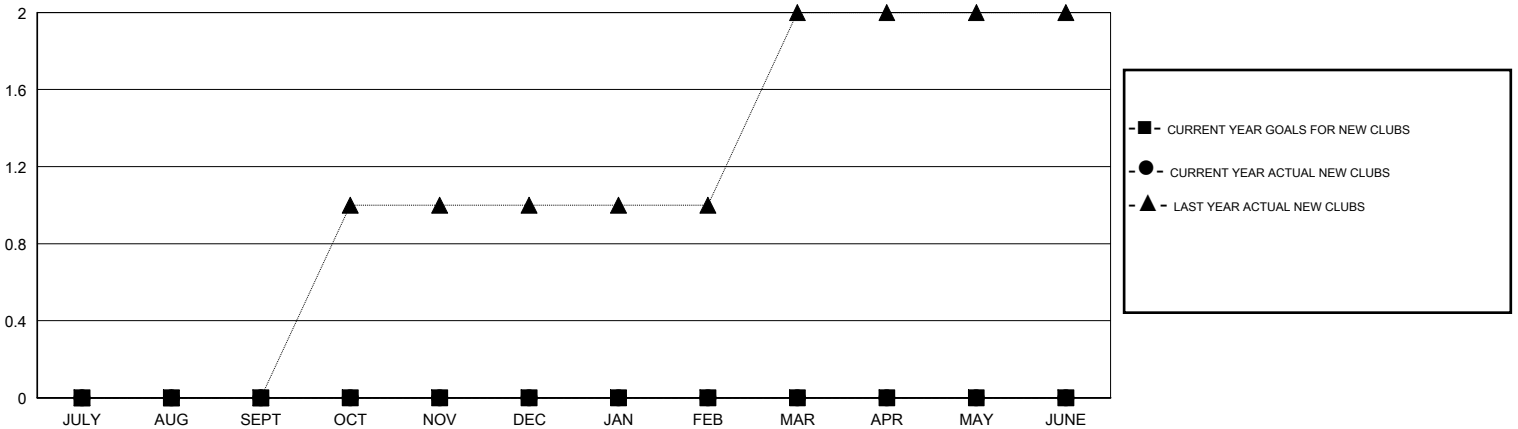
GMT: HAL GRIFFIN

LOCATION TEXAS

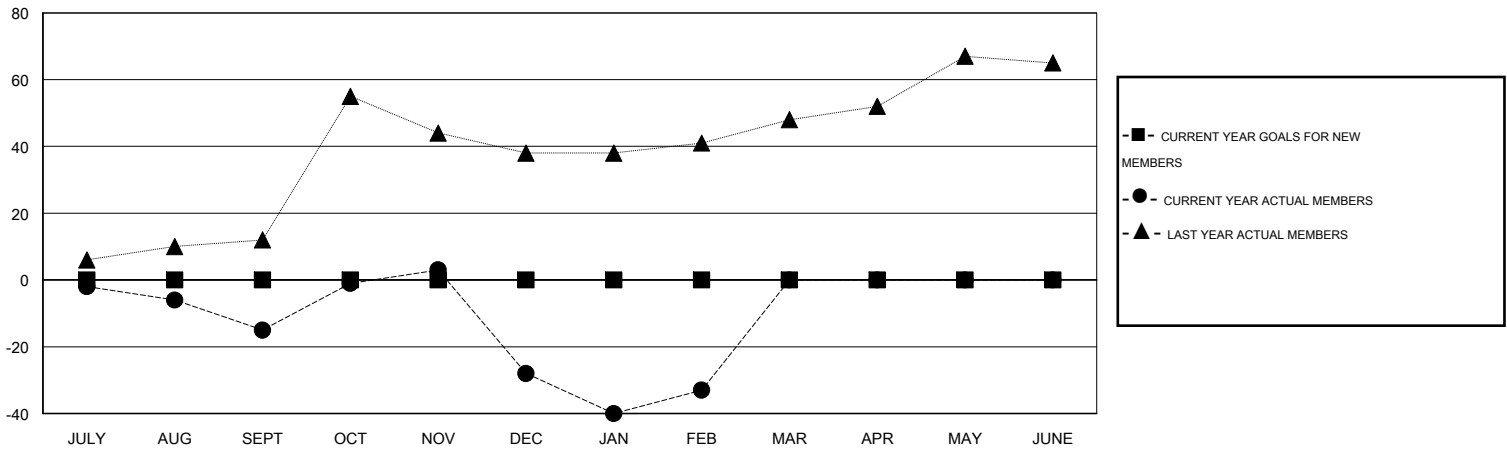
GMT CA 1

Clubs					Members				
RESULTS FOR 2014-2015					RESULTS FOR 2014-2015				
QUARTER	NEW CLUB GOAL	NEW CLUBS	DROPPED CLUBS	NET GAIN/LOSS	QUARTER	NEW MEMBER GOAL	CHARTER AND NEW MEMBERS ADDED	DROPPED MEMBERS	NET GAIN/LOSS
JULY/AUG/SEPT	0	0	0	0	JULY/AUG/SEPT	0	29	44	-15
OCT/NOV/DEC	0	0	2	-2	OCT/NOV/DEC	0	59	72	-13
JAN/FEB/MAR	0	0	1	-1	JAN/FEB/MAR	0	25	30	-5
APR/MAY/JUNE	0	0	0	0	APR/MAY/JUNE	0	0	0	0

GOALS AND ACTUAL NEW CLUBS CUMULATIVE



GOALS AND ACTUAL MEMBERS CUMULATIVE



DROPPED CLUBS: 3	32 CLUBS OF 58 ADDED 1 OR MORE NEW MEMBERS	<b>GENDER DISTRIBUTION</b>
		MALE 794 (65.35%)
		FEMALE 421 (34.65%)
<b>DROPPED MEMBERS</b>	<a href="#">CLICK HERE FOR HEALTH ASSESSMENT DATA</a>	<b>FAMILY UNIT MEMBERS</b> 222
DECEASED 13		HEAD OF HOUSEHOLD 105
CLUB CANCELLED 54		NON-HEAD OF HOUSEHOLD 117
OTHER 79		
<b>TOTAL 146</b>		